



Caledonian Maritime Assets Ltd
Municipal Buildings
Fore St
Port Glasgow PA14 5EQ

Tel: 01475 749920
Fax: 01475 745109

Edward Mountain
Convenor
Net Zero, Energy & Transport Committee
Scottish Parliament
EH99 1SO

31 March 2025

Dear Mr Mountain,

Update on New Vessels for Islay & Little Minch. MV Isle of Islay (NB1092), MV Loch Indaal (NB1093), MV Lochmor (NB1100) and MV Claymore (NB1101)

In our 28 February 2025 update to the Committee, we advised that we anticipated delivery of the MV Isle of Islay no earlier than the end of Q2 2025 and with regard to MV Loch Indaal, MV Lochmor and MV Claymore, we expect these vessels to follow a delivery schedule of six-month intervals from the delivery of MV Isle of Islay. We are working collaboratively with Cemre to reduce the delivery intervals in order that all four vessels can be delivered at the earliest opportunity. However, a key focus also remains on achieving the highest quality vessels that will serve the Island Communities for many years to come. Our team on site are monitoring the current situation in Istanbul.

The dates advised in our previous update 28 February 2025 are unchanged. We anticipate that if the shipbuilding activities (commissioning, sea trials, compartment completion, Classification Society and MCA surveys) go smoothly that MV Isle of Islay can be delivered by the Shipyard in Q3/2025.

MV Isle of Islay

Mv Isle of Islay completed dry dock period, underwater parts were checked and the hull flat and side bottom paint system applied, the vessel returned to the outfit quay at Cemre on the 11th of March 2025.

Work on the major RoRo equipment (Bow Door, Bow Ramp, 2 x Hoistable Car Deck, Stern Ramp) is ongoing and is planned to be mechanically complete before sea trials.

Commissioning and outfitting activities are ongoing; on completion of these activities the vessel will go on sea trials in the Sea of Marmara. We will provide further update to the committee on the date of the sea trials following the successful completion and presentation of the pre-sea trials commissioning and outfitting activities to CMAL, Classification Society and MCA.



Caledonian Maritime Assets Ltd
Municipal Buildings
Fore St
Port Glasgow PA14 5EQ

Tel: 01475 749920
Fax: 01475 745109

MV Loch Indaal

MV Loch Indaal is berthed at the quay at the shipyard. General outfit work is ongoing throughout the vessel.

Shore power is 'On' with power to the vessel's main DC multi-drives, 415V & 230V Switchboards and Motor Control Centres. The Main Engines/Generators have been 'Run', the shipyard are carrying out load testing of the Main Engines/Generators before presenting to CMAL and the Classification Society.

Electrical installation is progressing, more cable being installed with major activity in and around the Wheelhouse consoles with cable terminations.

Pipework is progressing, with installation surveys being carried out.

Accommodation areas at the early stages of outfitting.

Work on the manufacture and installation of the RoRo equipment is progressing.

NB1100 (MV Lochmor)

NB1100 is on the slipway at the shipyard, the main hull structure is complete. Outfit outwork is ongoing, installation of equipment, cables, pipework, ventilation and insulation is ongoing throughout the vessel.

NB 1101 (MV Claymore)

NB1101 is on the slipway at the shipyard, the main hull structure is complete, the vessel is at the early stages of outfitting, manufacture and installation of pipework on the vessel is well underway.

Installation of cable containment is ongoing. Installation of equipment in the engine room is ongoing. Fitting of insulation is ongoing in some areas.



Caledonian Maritime Assets Ltd
Municipal Buildings
Fore St
Port Glasgow PA14 5EQ

Tel: 01475 749920
Fax: 01475 745109

Port Enabling Works

Civil engineering works at all three locations are substantially complete, with only minor snagging at Kennacraig and Port Askaig, and some remedial works at Colonsay, which are anticipated to be complete by the end of May outstanding. The remedial works at Colonsay are being carried out between ferry sailings with no planned service alterations.

Mooring aid winches for Port Askaig planned to install late April. Power for the mooring aid will temporarily be provided by generator pending installation of a new electricity supply meter by EDF, which has a 12-week lead time.

Initial outline design of the shore power system for Pt Askaig has been received from our framework supplier, with design for Kennacraig to follow. Electricity network upgrades to both sites are dependent on wider network reinforcements not anticipated until June 2026; shore power infrastructure is scheduled to be installed at both sites ahead of this.

Overall

The overall costs of delivering the four vessels, including CMAL and CalMac costs, remain largely on track, including risk allowance of around 3%, advised in our 19 December 2024 update.

Whilst MV Lochmor and MV Claymore remain on the slipway and are yet to be launched the work being carried out is not causing any concern or delay as the slipways can carry the weight of a fully completed vessel.

We continue to work closely with Transport Scotland and CalMac to consider the service implications of the extended delivery dates and plan accordingly for revised entry in to service dates. As previously advised, we do not envisage the delivery of the MV Isle of Islay and future vessels having a significant impact on the deployment and cascade plan.

Photographs

Isle of Islay (NB 1092)



Isle of Islay (NB 1092)



Loch Indaal (NB1093)

Aft Accommodation External



Aft Accommodation Internal



Wheelhouse



Wheelhouse



Passenger External Doors



View from Port Funnel Top



NB1100 (Lochmor)

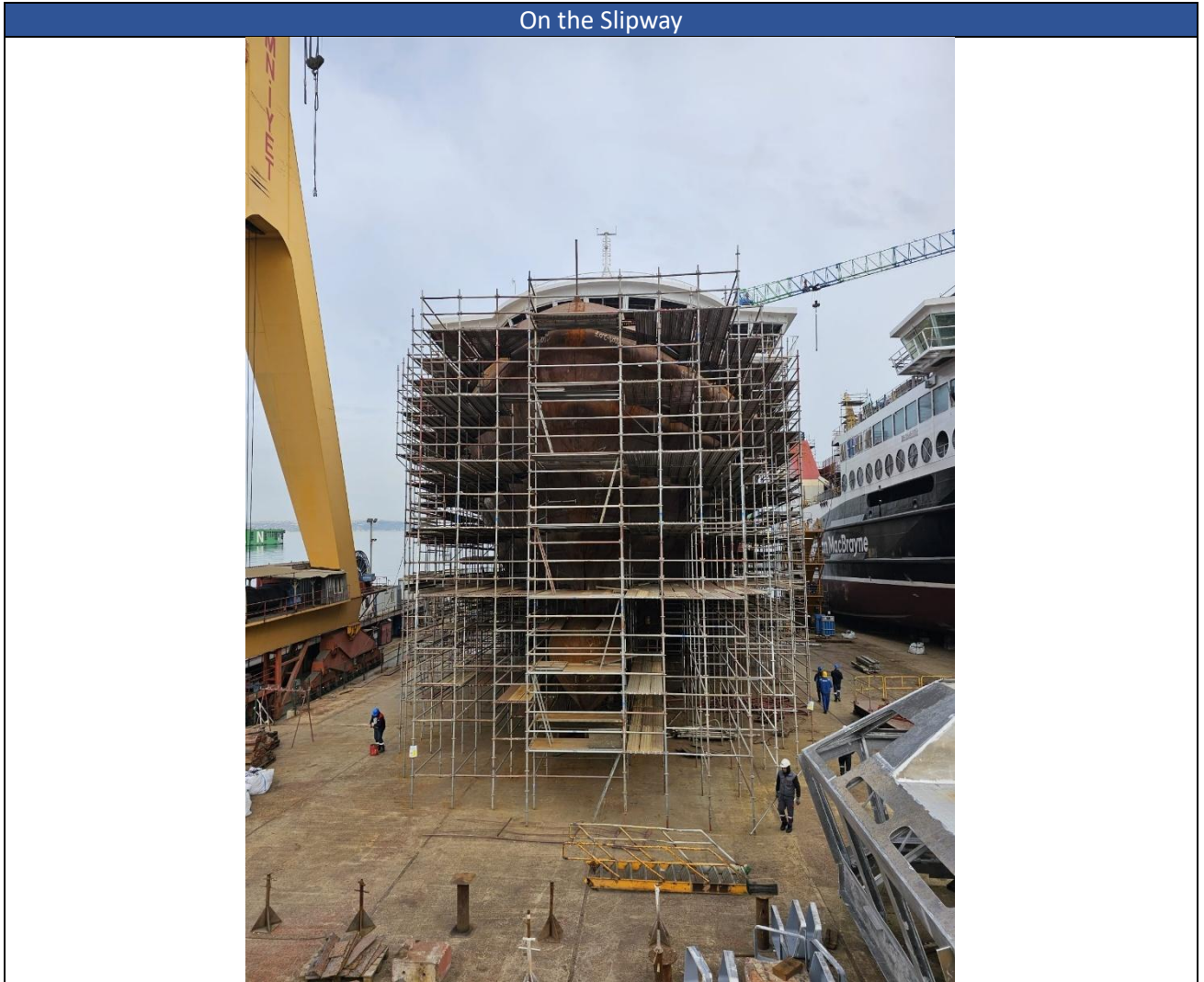
On the Slipway (NB1101 in the Background)



On the Slipway



NB1101 (Claymore)



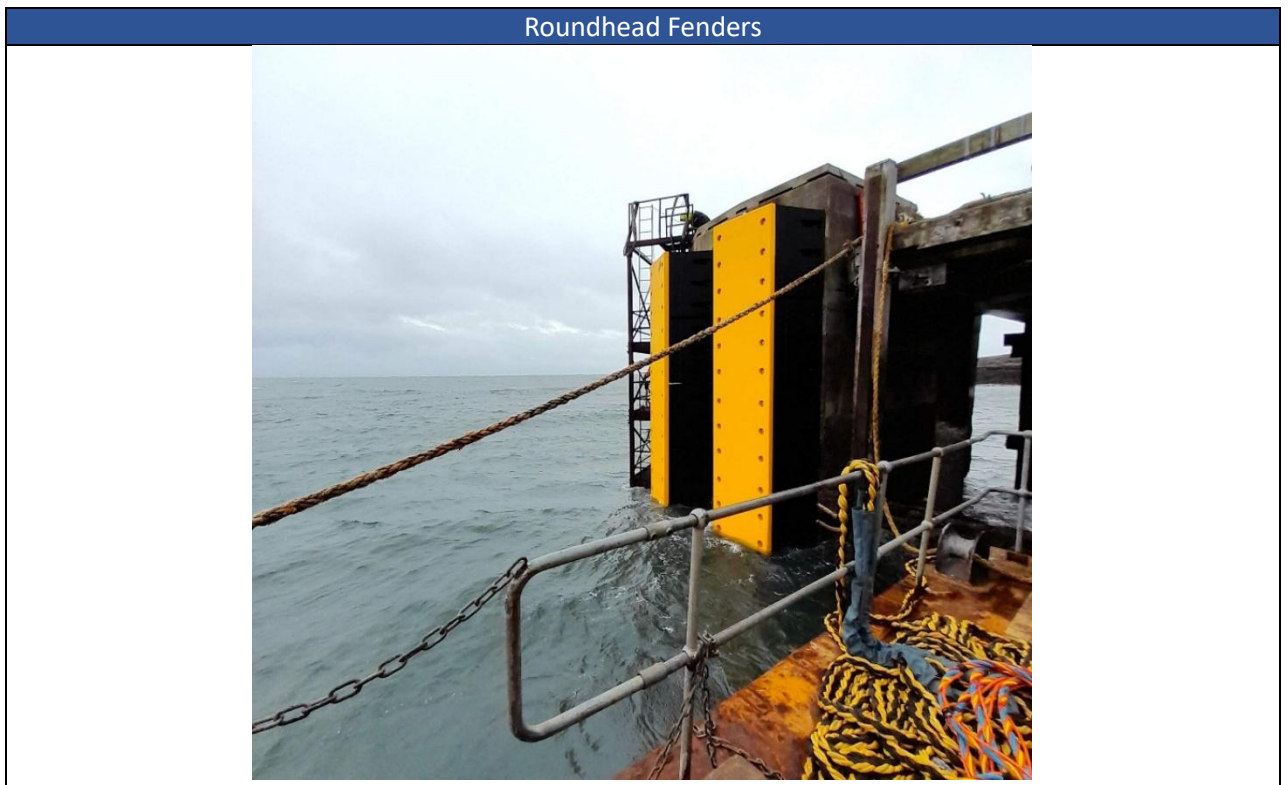
The Four Vessels (including Loch Indaal Funnel Top!)



Kennacraig



Colonsay





Caledonian Maritime Assets Ltd
Municipal Buildings
Fore St
Port Glasgow PA14 5EQ

Tel: 01475 749920
Fax: 01475 745109

Yours sincerely

Kevin Hobbs
Chief Executive Officer

for and on behalf of
Caledonian Maritime Assets Limited